



KONICA MINOLTA

The essentials of imaging



Printgroove POD Suite

Efficient workflow management at its best



Applications Printgroove POD Suite



Running the print floor with automated efficiency

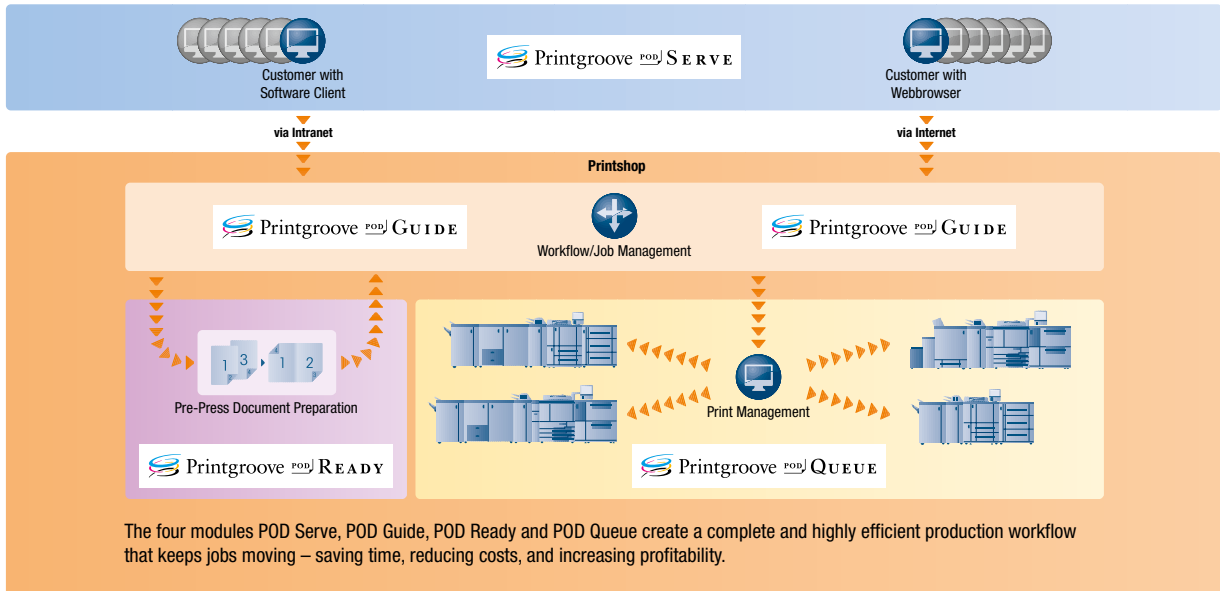
With the Printgroove POD software suite Konica Minolta proposes a comprehensive yet flexible concept for highly efficient, controlled print production. The Printgroove POD suite optimises workflows, streamlines production processes, and increases the overall productivity of CRDs, printing services and digital commercial printers alike. It helps them protect their margins, ensures round-the-clock availability and enables print providers to offer their customers the 24/7 web-2-print services that are essential to remain competitive these days.

- Printgroove POD dramatically improves the workflow of mid-size companies and departments – no matter what the throughput and how big the workload. Automated workflows are less costly, more efficient and above all, more reliable.
- Printgroove POD guarantees a wide range of features that enhance performance and increase efficiency, ranging from 24/7 job submission to automated job ticketing, quoting, makeready, to print queue management and device status monitoring – even including finishing, shipping and billing.
- Printgroove POD provides an output device management system that ensures a consistent utilisation of all integrated output devices, improving the overall throughput while freeing valuable manpower for more important tasks.
- Printgroove POD enables print shops to configure their own individual workflow, integrate as many production steps as required and even include non-print items into the finished customer product.

Integrating seamlessly with Konica Minolta's bizhub PRO devices, the Printgroove POD software suite is the perfect fully-automated production solution to optimise the production efficiencies the bizhub colour and b/w products were created for.



→ Workflow

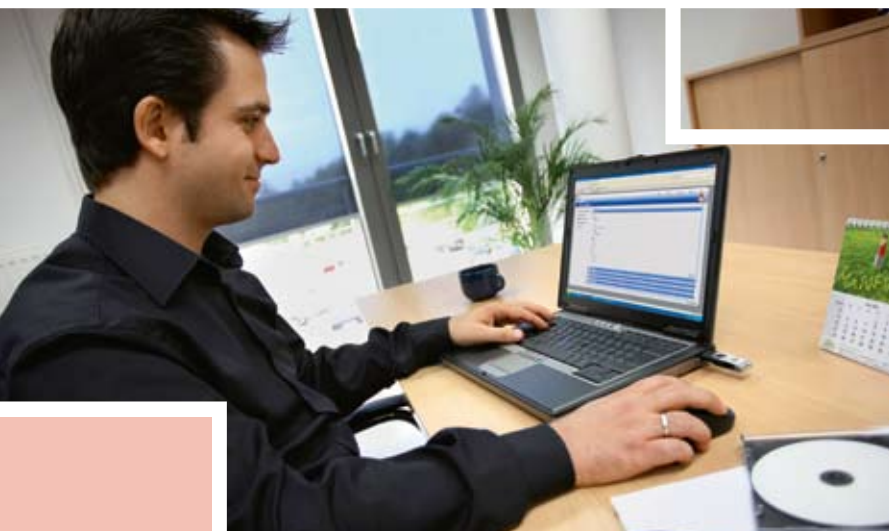


→ Key features

- **Streamlined workflow**
Every step of the ordering and production process is monitored and controlled – from first order to shipment – supporting and streamlining the complete workflow.
- **High production flexibility**
Any file format can be integrated into the workflow and production process – even non-print items can be controlled and included in the finished product.
- **Full modularity**
The Printgroove POD suite is fully modular with seamlessly integrating components – which increases flexibility, efficiency and reliability.
- **No need to change existing routines**
The workflow of the Printgroove POD software suite is individually configurable and can be adapted exactly to any customer requirements.
- **Complete control**
All production steps, from order to delivery, are fully monitored and controlled. At any time this provides the staff with full details on all processed jobs as well as the status of all output devices. Also, thanks to the job ticket management and job tracking functionality, customers can be enabled to check the status of their orders.

→ Benefits

- **Streamlined workflow**
The automated and fully controlled workflow improves efficiency and reliability, avoids production mistakes and increases productivity.
- **High production flexibility**
This intelligent workflow and allows the combination of print and non-print products, for example the inclusion of flash files for demo CDs or the packaging of give-aways into the production process.
- **Full modularity**
Printgroove POD is guaranteed to grow with user needs and can be enhanced and extended at any time – offering utmost user flexibility.
- **No need to change existing routines**
Thanks to the software suite's complete adaptability, users don't need to adopt new procedures – familiar routines can be retained, minimising the learning.
- **Complete control**
Full transparency is ensured, keeping administrators and specialist print staff in control. And letting customers check their job status online reduces telephone enquiries, saving valuable time.



Web submission for around-the-clock availability

The online job submission tool Printgroove POD Serve enhances the print workflow with job ticket creation and real-time status verification. With the support of this functionality the print shop facilities can be available to customers around the clock. Users will appreciate the convenience of 24/7 contact to their print provider and the simple ordering process which allows an easy combination of print and non-print products.

➔ Key features

- **Online job tickets and confirmation**
Users are guided through the job ticket, which prompts them to clearly specify all required details for the job. Once the job ticket is completed, customers can ask for an online quotation before the order is placed.
- **Online job status tracking and notification**
From job submission to completion, real-time job status verification is available to customers. In addition, automatic e-mail job status notifications can be configured for administrators, managers and/or customers.
- **Flexible data processing**
Unlike most production systems that only work with PDF files, Printgroove POD Serve can handle any file format (text, graphics, photos, presentations, multimedia), ensuring highest flexibility for the processing of customer data.

➔ Benefits

- **Online job tickets and confirmation**
Automated job ticketing assures that all information required to produce the job is available and that there is no need for reconfirmation via telephone or e-mail. This streamlines the print workflow and maximises productivity.
- **Online job status tracking and notification**
The interaction between print shop and customer is clear and fully reliable so that the customer always knows the status of his job – less time is spent on the telephone on both sides.
- **Flexible data processing**
This functionality increases the print provider's flexibility and his capabilities to accommodate any requirement from customer side. In consequence he can improve his services for enhanced customer convenience.

System-wide monitoring and workflow management



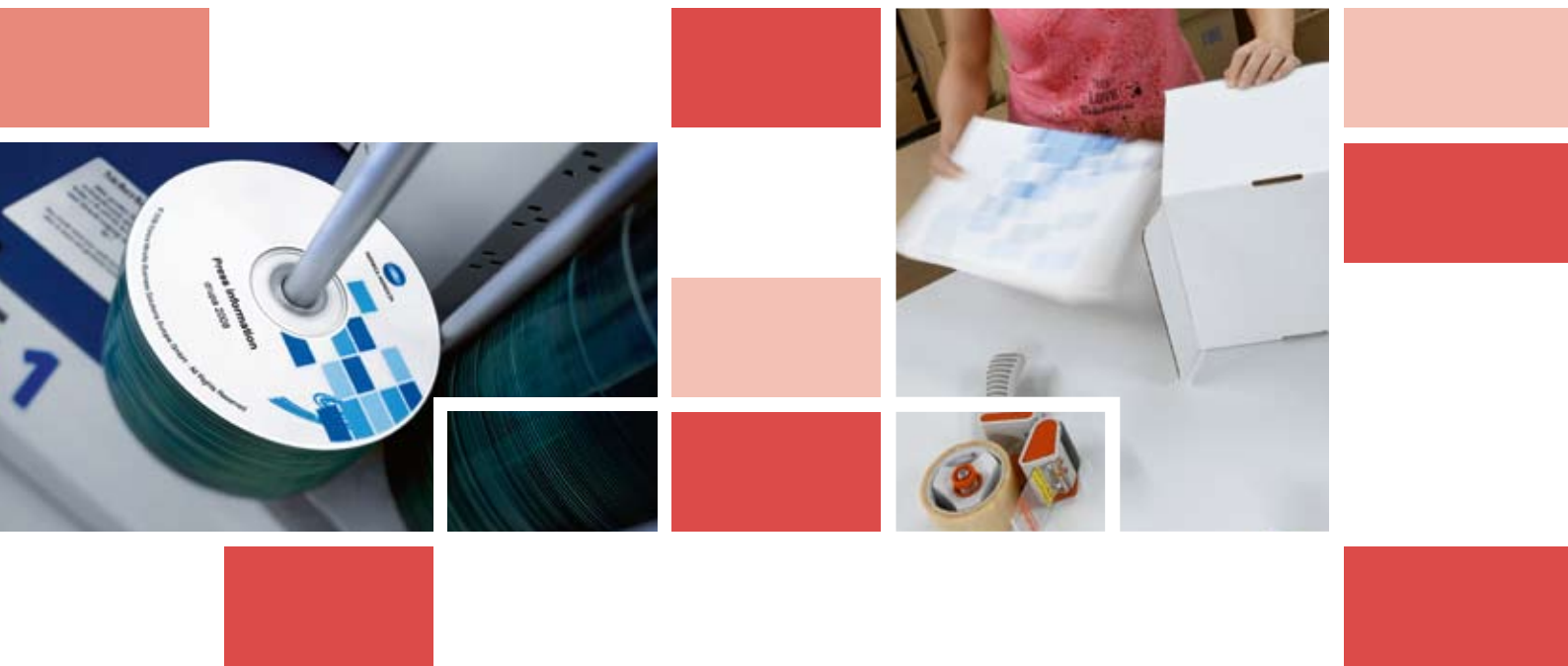
Printgroove POD Guide runs the print floor with automated efficiency and makes available system-wide monitoring. This highly efficient workflow and job management tool enables complete management of all jobs, ensures real-time status monitoring of all devices, and includes the fast and easy creation of seamless workflows with as many production steps and stations as the print shop requires.

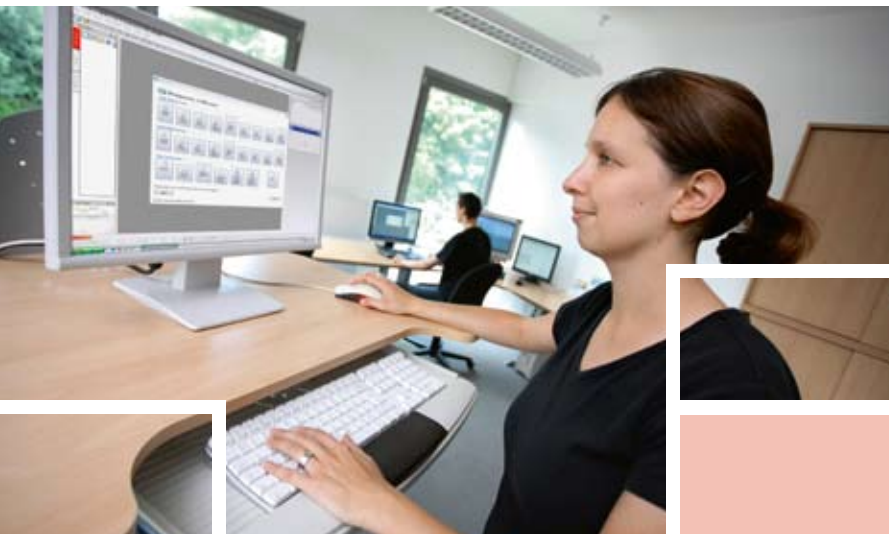
➔ Key features

- **Ticket and track management**
This tool manages job tickets every step of the way, from start to finish – submission, print production, delivery and billing.
- **Job flow overview, reports and analysis**
The combination of job ticketing and job tracking gives print managers total control over the production floor. Thanks to automatic reporting and detailed analysis, workflows can be observed and bottlenecks eliminated more effectively.
- **Workflow builder**
With Printgroove POD Guide the workflow can be customised to accommodate as many production steps and stations as required.

➔ Benefits

- **Ticket and track management**
Such reliable control of the complete production process ensures the timely completion of each job.
- **Job flow overview, reports and analysis**
Detailed reports called up on demand make the monitoring of workflows highly efficient. The improved transparency of device utilisation enables the print manager to ensure balanced usage of all equipment, making workflows and production routines faster and more productive.
- **Workflow builder**
The flexible workflow builder enables integration of all functions – not just printing but also post-production steps such as shipping and invoicing.





Prepress management with efficient makeready

Printgroove POD Ready is the convenient prepress management solution for the light production market. Extending the Printgroove POD software suite with professional yet easy-to-use makeready capabilities, Printgroove POD Ready enables quick and easy previewing and editing of PDF documents before sending them to production. With Printgroove POD Ready it is simple and straightforward to take on jobs from Printgroove POD Guide and return them to the workflow after the required document editing has been performed. Printgroove POD Ready is a highly flexible tool that also offers its benefits as stand-alone-application.

➔ Key features

- **Auto and manual imposition**
Imposition schemes can be automatically applied or created and checked by the operator. The imposition schemes support all output options available on the output devices, such as perfect binding, booklet making, etc.
- **Preflight and print preview**
Simulating the transmission of the print data to the output device, this tool detects possible problems, e.g. with the embedding of fonts.
- **Scanning of paper jobs**
Thanks to this feature, combining paper originals and electronic files into one job is simple and straightforward. To optimise the scans, functions like deskew and despeckle are also provided.
- **Integration with external applications**
The functionality connects the Printgroove POD suite to software programs such as Adobe Acrobat/Photoshop/Illustrator or Quire Imposing.

➔ Benefits

- **Auto and manual imposition**
The imposition versatility makes even the creation of the most complex products quick and easy, increasing the productivity in document production.
- **Preflight and print preview**
Providing a convenient job check before processing, preflight and print preview indicate potential problems before printing, e.g. with the layout – eliminating the production of faulty documents and minimising waste.
- **Scanning of paper jobs**
The valuable support for non-electronic information facilitates the integration of already existing documents into an electronic workflow.
- **Integration with external applications**
The connectivity to 3rd party applications allows integrating external applications into a single workflow avoiding having to switch between different applications.



Streamlined workflow and queues under control



Offering comprehensive print queue management, Printgroove POD Queue targets mid-size companies and CRDs dealing with multiple digital printers and high production volumes. Printgroove POD Queue effectively manages and edits print queues by linking multiple output devices throughout the production floor – including control of process, tasks, capacities and devices. As a result the entire hardware is most efficiently utilised and the workflow is perfectly streamlined.

➔ Key features

- **2-way-communication**
This functionality provides real-time status control and output status monitoring. The automatic job-based distribution facilitates the allocation of each print job to the best-matched output device.
- **Last-minute job ticket editing**
With this feature just-in-time modifications can still be made, even in the print room right before production.
- **Automated batch processing**
The fully automatic processing of similar jobs is enabled with this functionality.
- **Cluster Printing and Color Split**
If this functionality is equipped the print room operator can easily create different clusters, for example combining suitable output devices to produce one extensive job simultaneously, or splitting the production of coloured and b/w pages in one job among colour and b/w printers.

➔ Benefits

- **2-way-communication**
2-way-communication between the hardware and the software ensures that each job goes to the most suitable output device – which minimises downtime, speeds up production and increases productivity.
- **Last-minute job ticket editing**
Last-minute editing and the late incorporation of changes avoid production delays – no need to postpone print jobs due to faulty settings or late updates.
- **Automated batch processing**
Similar jobs are grouped for production. With that, batch processing supports the balanced use of all available output devices, increasing throughput and efficiency.
- **Cluster Printing and Color Split**
Clustering supports the most efficient and most economic use of all output devices, ensuring speedy production and minimising print costs where possible, e.g. by the separate production of colour and b/w pages on the appropriate output devices.



KONICA MINOLTA



Technical specifications

Minimum Hardware Specifications (Printgroove POD Client)

Operating System

Windows XP Pro (SP2)
Windows XP Pro Home (SP2)
Windows 2000 (SP4)
Windows Vista Business Edition (32-bit)

Processor

Pentium 4, 1.2 GHz

Memory

1GB

HDD

500 MB free space

Monitor

Color, resolution of 1024 x 768

Network

TCP/IP 100BaseT

Storage

CD/DVD drive

Minimum Hardware Specifications (Server)

Operating System

Ubuntu Server 6.06 English
(included on Printgroove POD System CD) English

PC

PC/AT compatible

Processor

Pentium IV 2.8GHz

Memory

1GB

HDD

free space 20 GB

USB port

Storage
CD/DVD drive - a rewritable drive is required
for creating a backup disk.

Recommended Hardware Specifications (Printgroove POD Server)

Operating System

Ubuntu Server 6.06 English
(included on Printgroove POD System CD) English

PC

PC/AT compatible

Processor

Intel Xeon Core or AMD equivalent

Memory

8GB

HDD

free space 180 GB

USB port**Storage**

CD/DVD drive - a rewritable drive is required
for creating a backup disk.

Minimum Hardware Specifications (Printgroove POD Ready)

Operating System

Windows XP Professional (SP2 or later)
Windows Vista Business/Enterprise

Processor

Pentium 4 (2.8 GHz) or higher

Memory

2GB or higher

Free hard disk space 4GB or higher

**Display resolution 1024 x 768 pixels or higher
(Recommended: 1280 x 1024 pixels)**

Required application Adobe Acrobat 7.0/8 Professional

Others CD/DVD drive

Scanner with TWAIN

- The support and availability of the listed specifications and functionalities varies depending on operating systems, applications, network protocols as well as network and system configurations.
- Some of the product illustrations contain optional accessories.
- Specifications and accessories are based on the information available at the time of printing and are subject to change without notice.
- Konica Minolta does not warrant that the specifications mentioned will be error-free.
- Microsoft, Windows and the Windows logo are trademarks, or registered trademarks, of Microsoft Corporation in the United States and/or other countries.
- All other brand and product names may be registered trademarks or trademarks of their respective holders and are hereby acknowledged.

Your Konica Minolta Business Solutions Partner:



Konica Minolta
Business Solutions Europe GmbH
Europaallee 17
30855 Langenhagen • Germany
Tel.: +49 (0) 511 74 04-0
Fax: +49 (0) 511 74 10 50
www.konicaminolta.eu